

Figure 1: Atlantic MOC 1853-1857

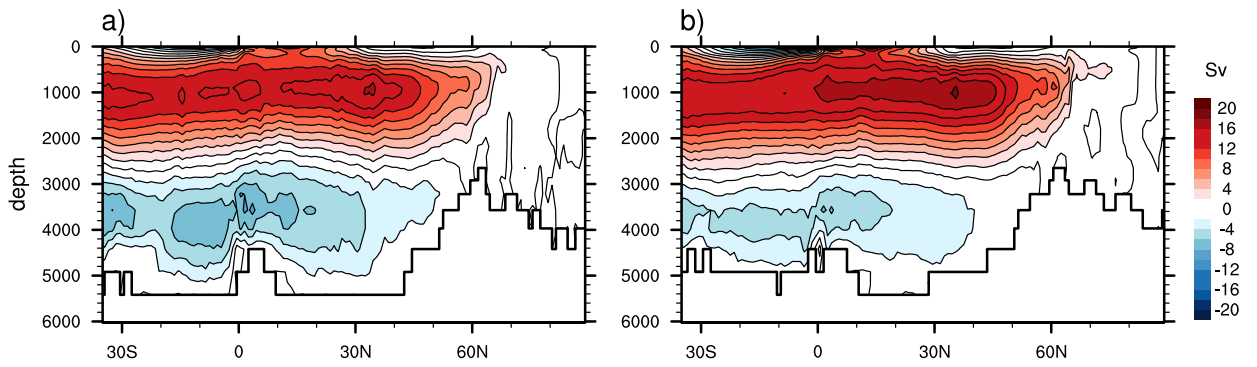


Figure 2: Atlantic MOC 1869-1873

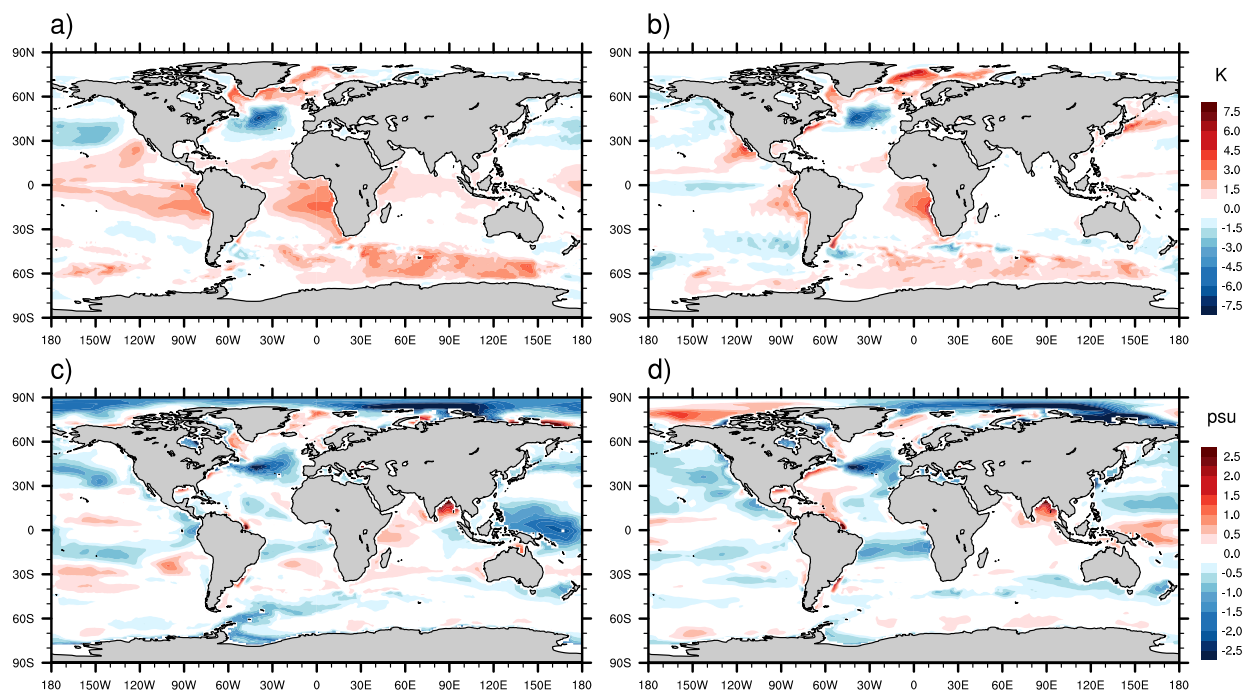


Figure 3: Surface temperature and salinity biases 1853-1857

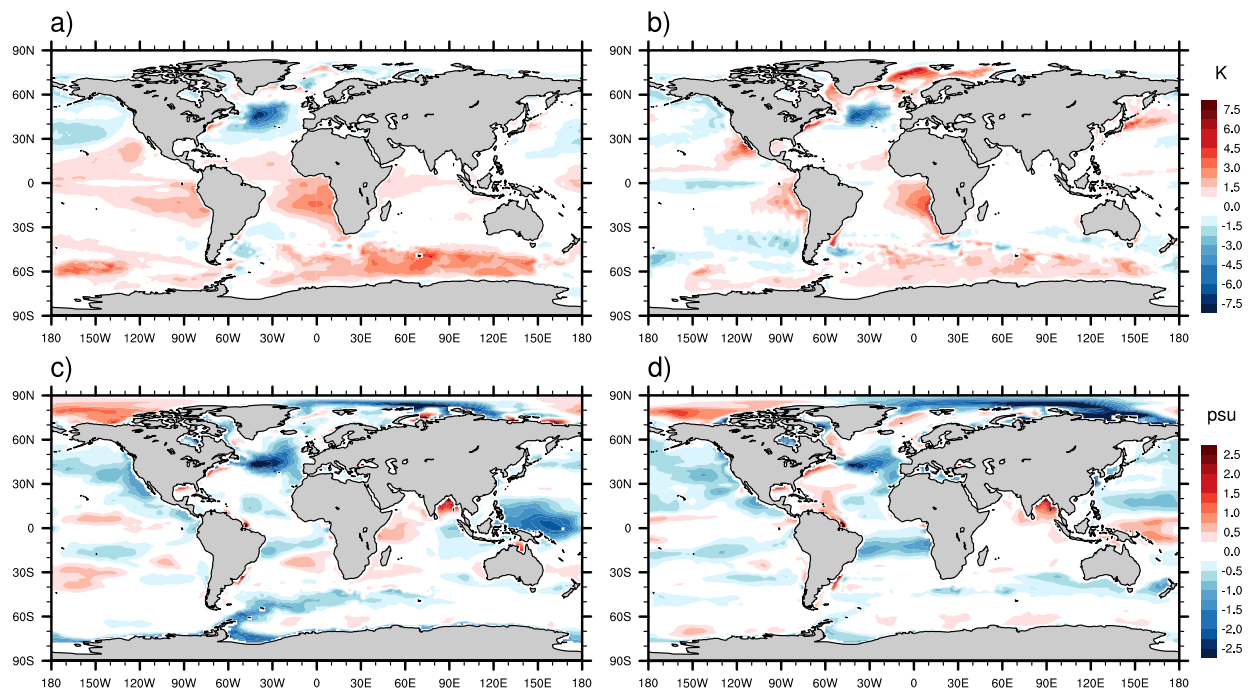


Figure 4: Surface temperature and salinity biases 1869-1873

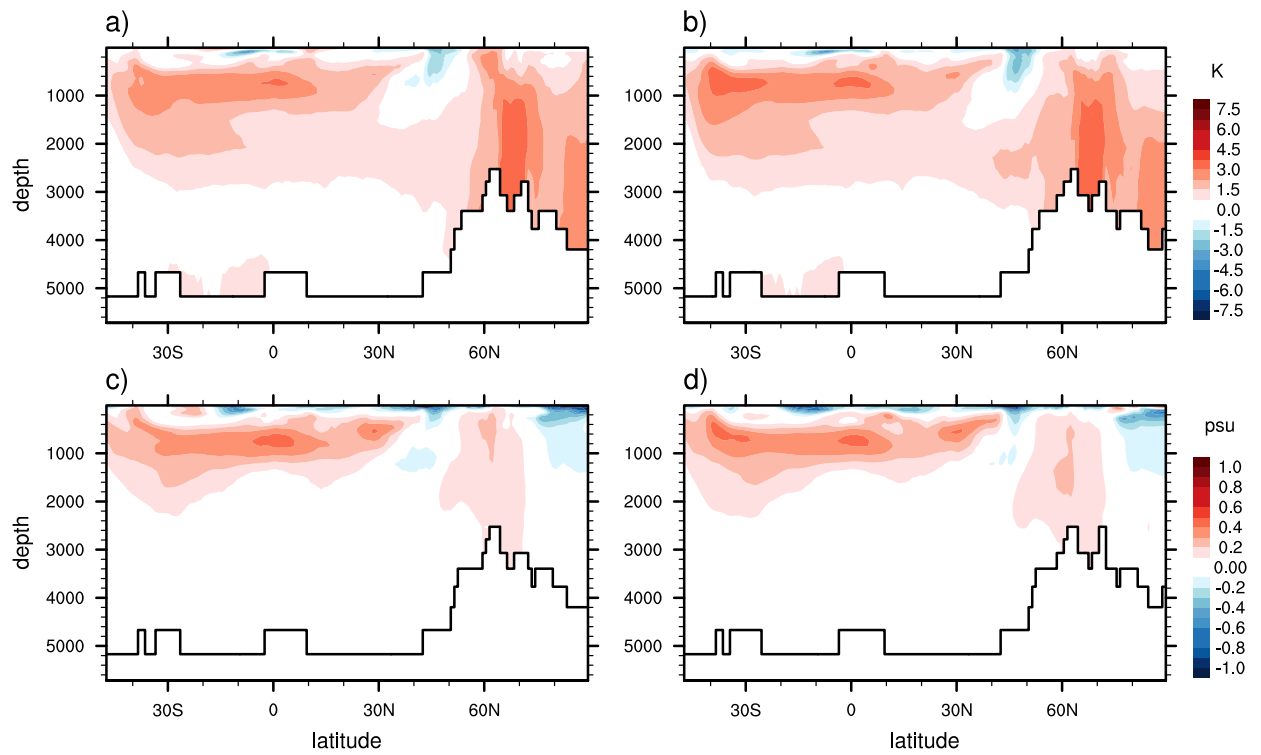


Figure 5: Zonal averaged temperature und salinity biases 1853-1857, Atlantic

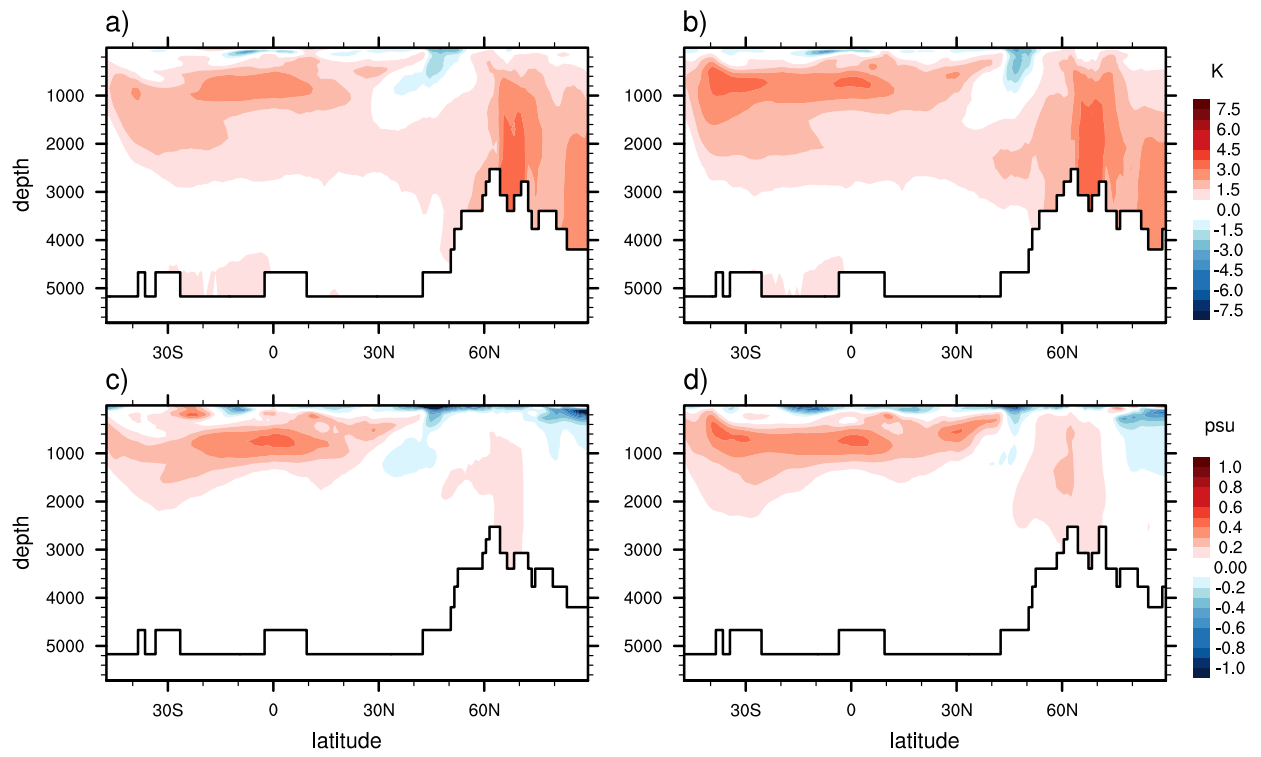


Figure 6: Zonal averaged temperature und salinity biases 1869-1873, Atlantic

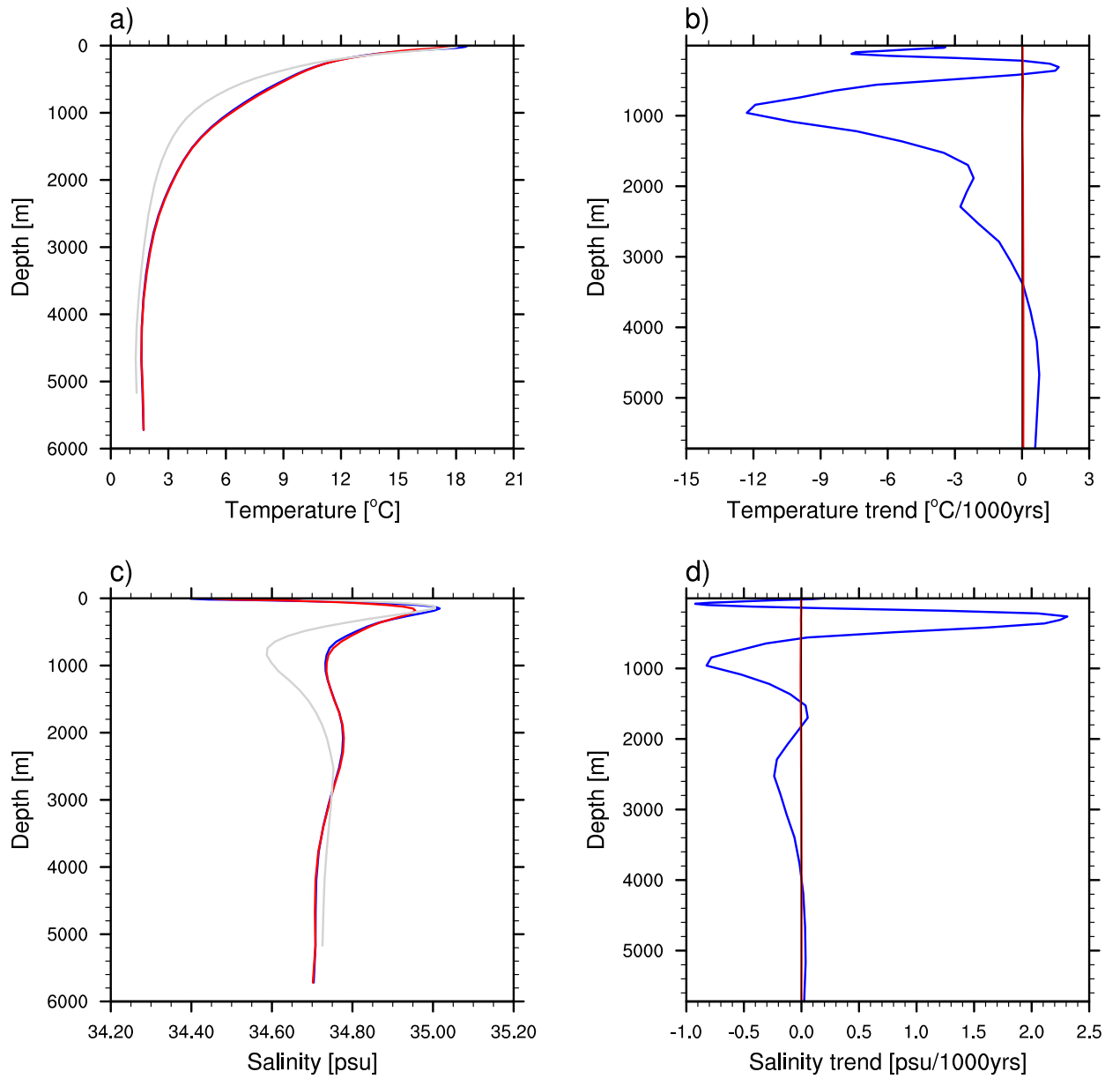


Figure 7: Vertical temperature and salinity profiles 1853-1857

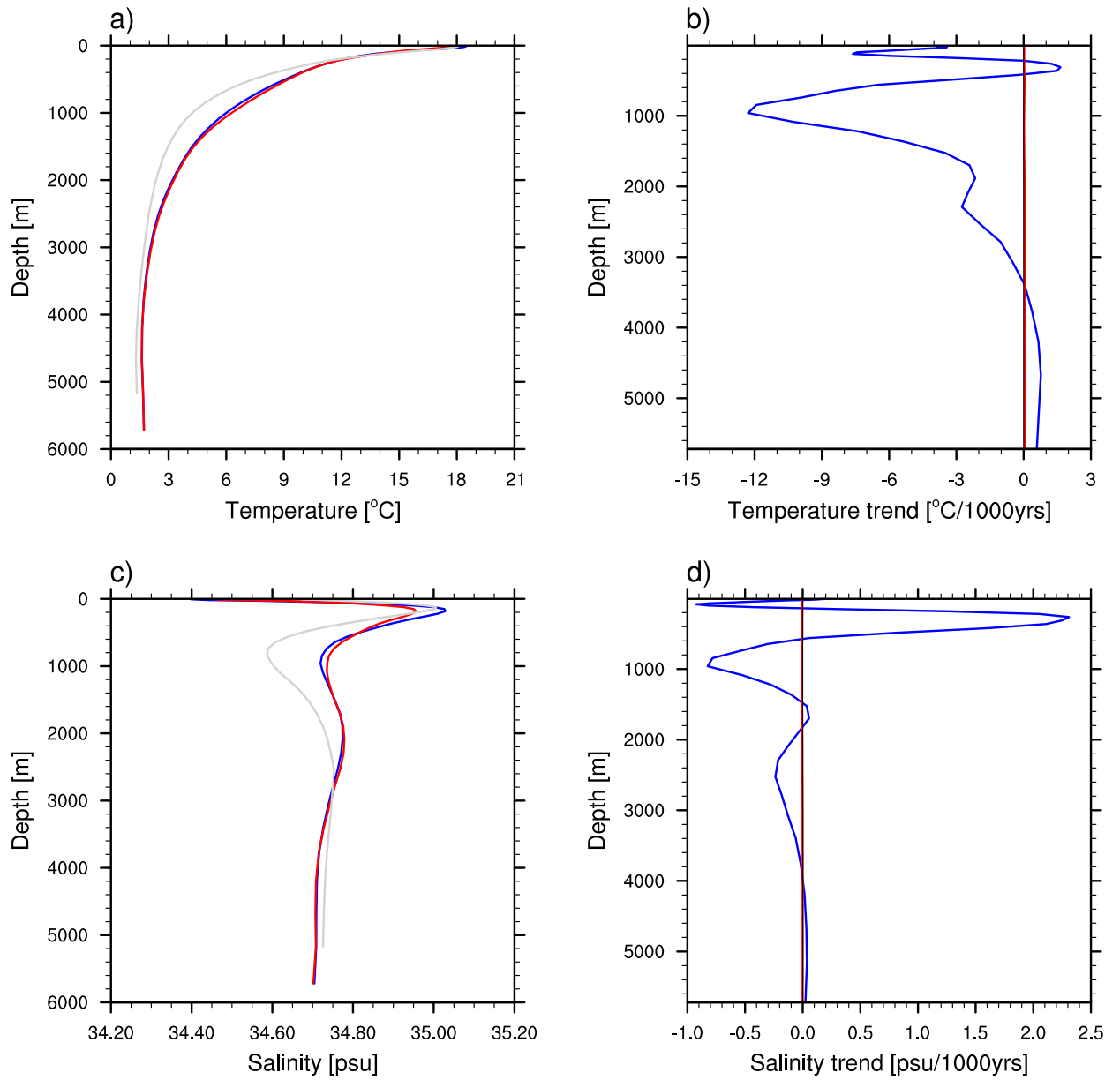


Figure 8: Vertical temperature and salinity profiles 1869-1873

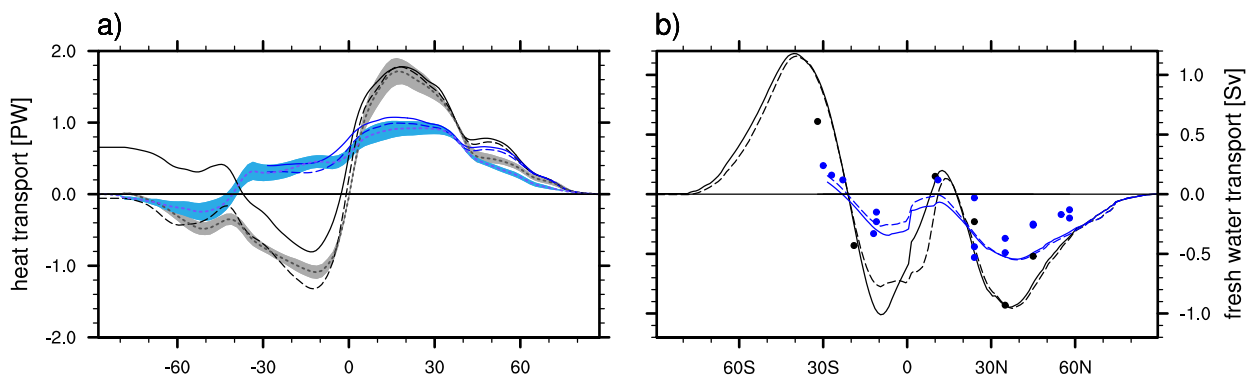


Figure 9: Heat and fresh water transports 1853-1857

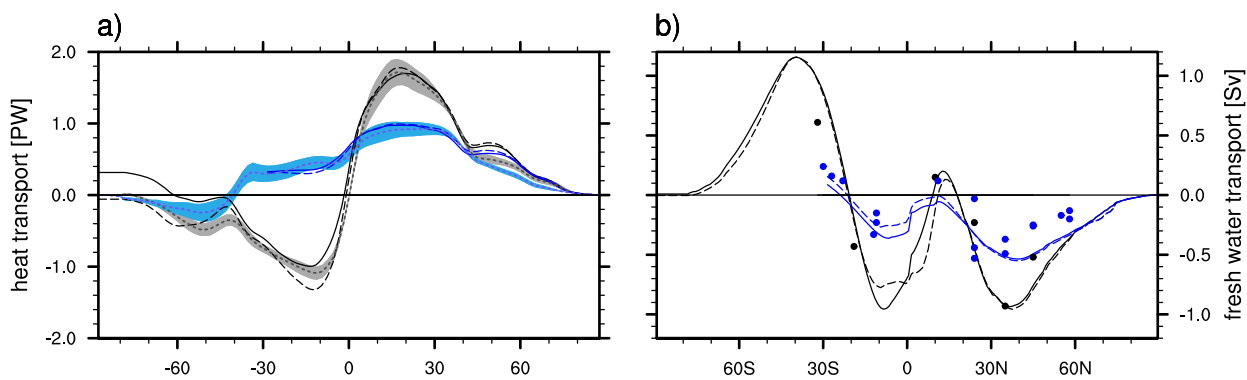


Figure 10: Heat and fresh water transports 1869-1873



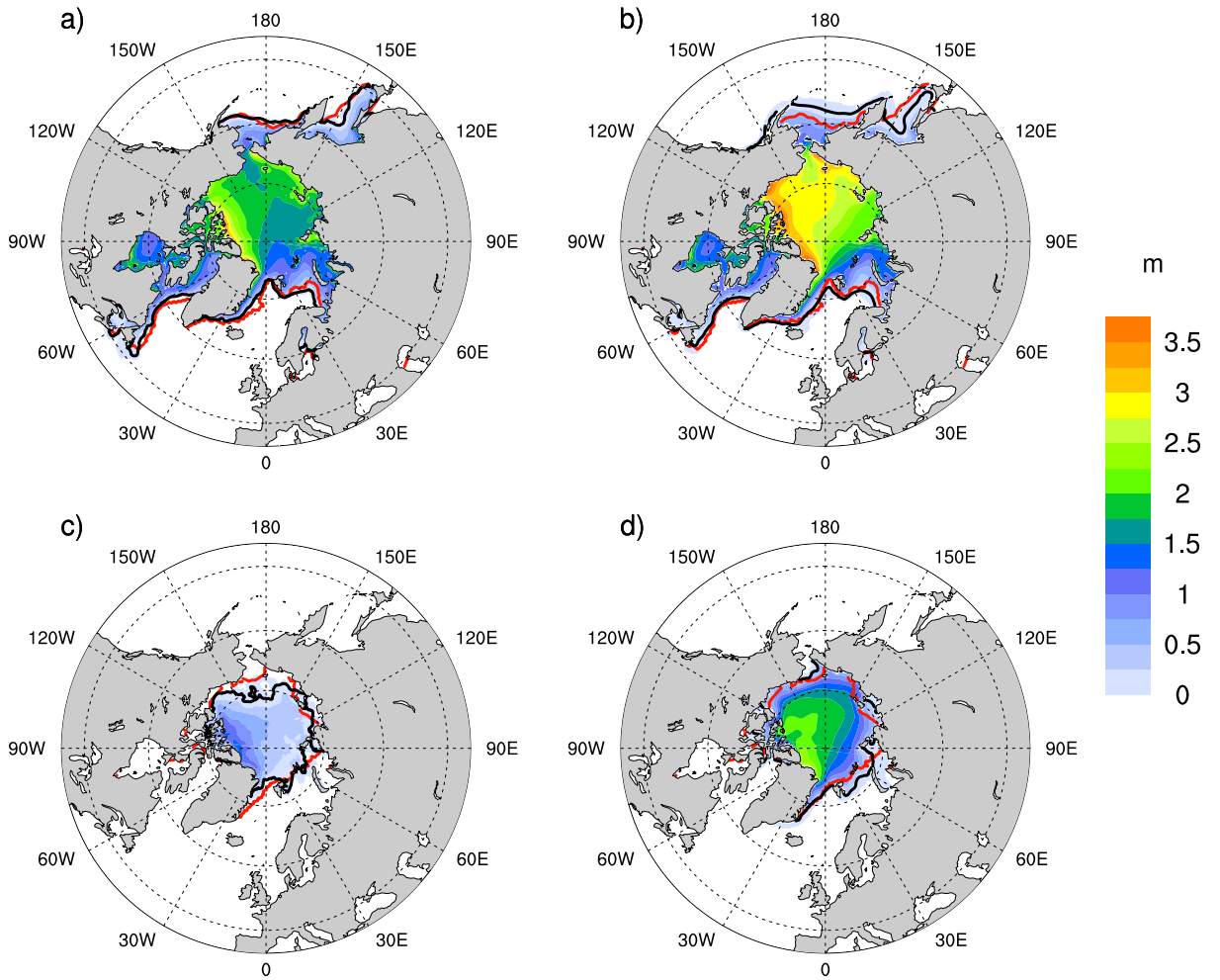


Figure 11: Sea ice NH 1853-1857

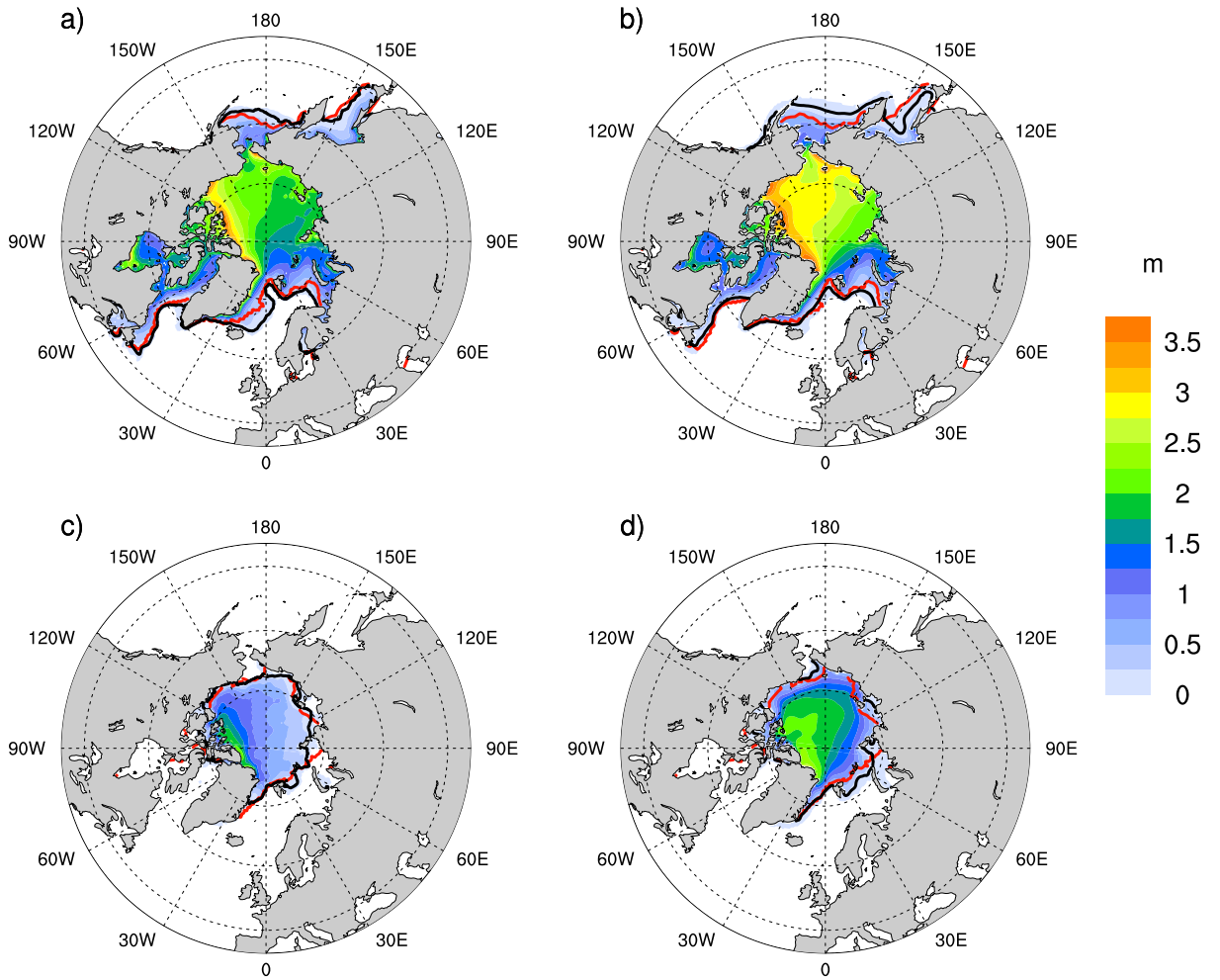


Figure 12: Sea ice NH 1869-1873

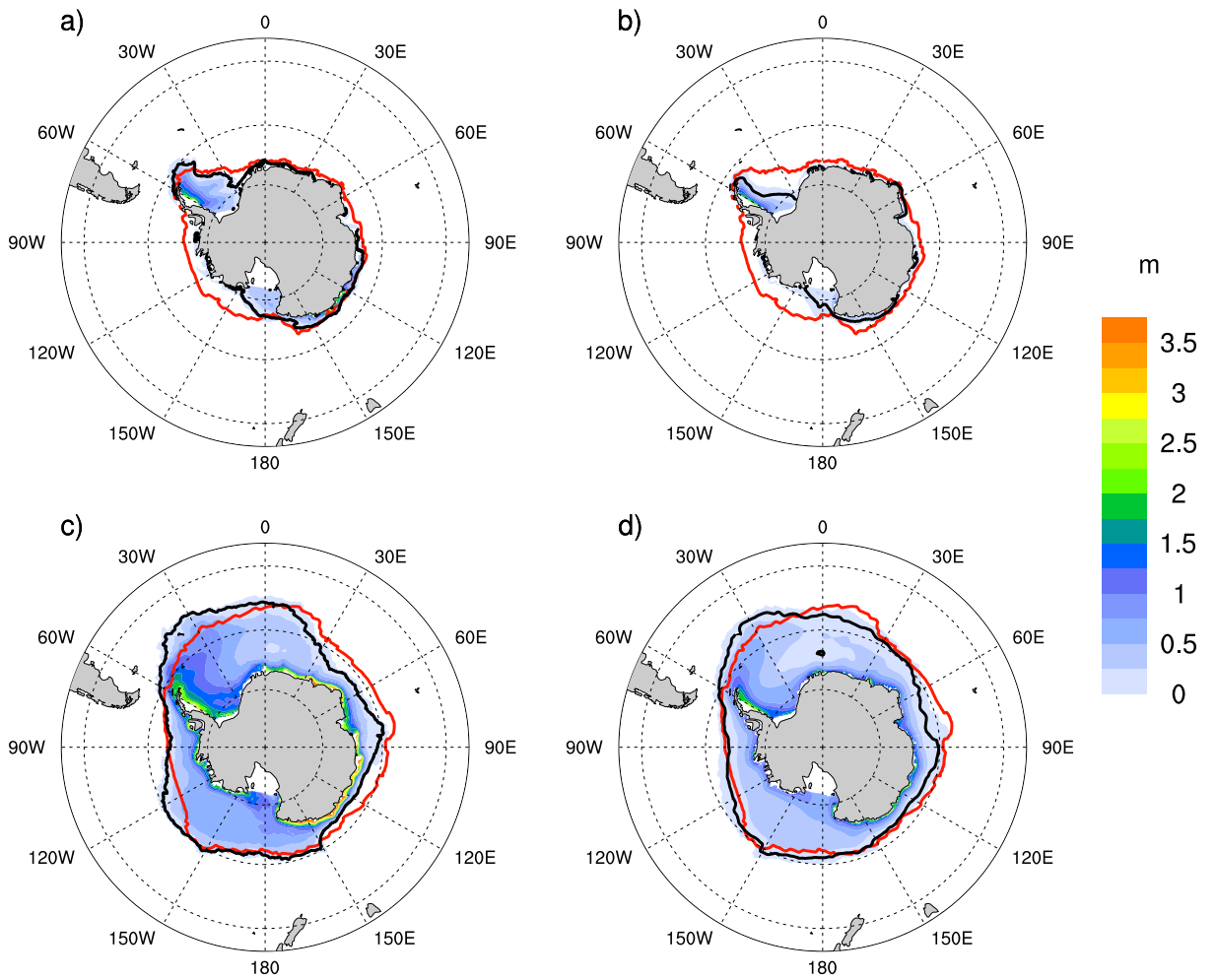


Figure 13: Sea ice SH 1853-1857

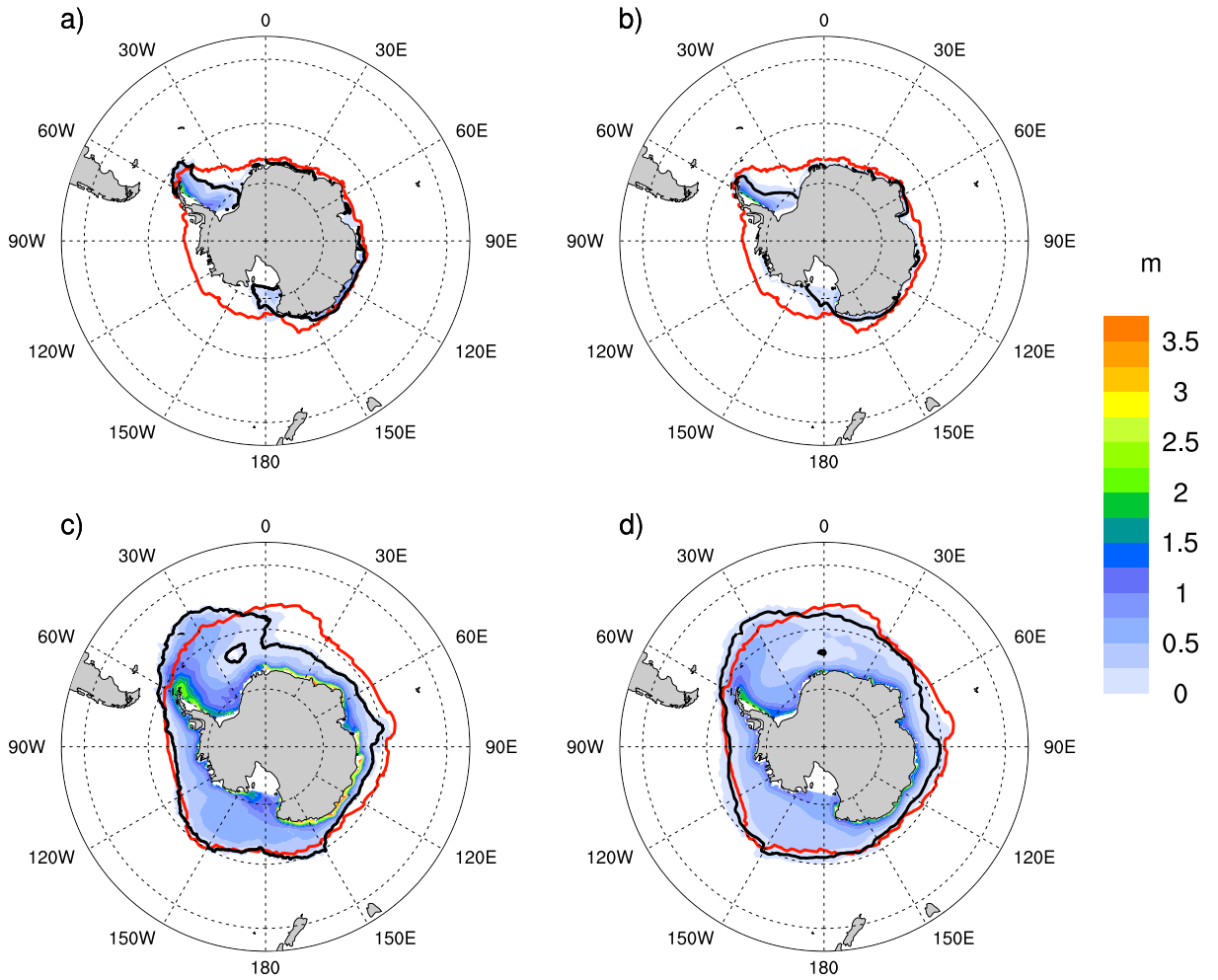


Figure 14: Sea ice SH 1869-1873

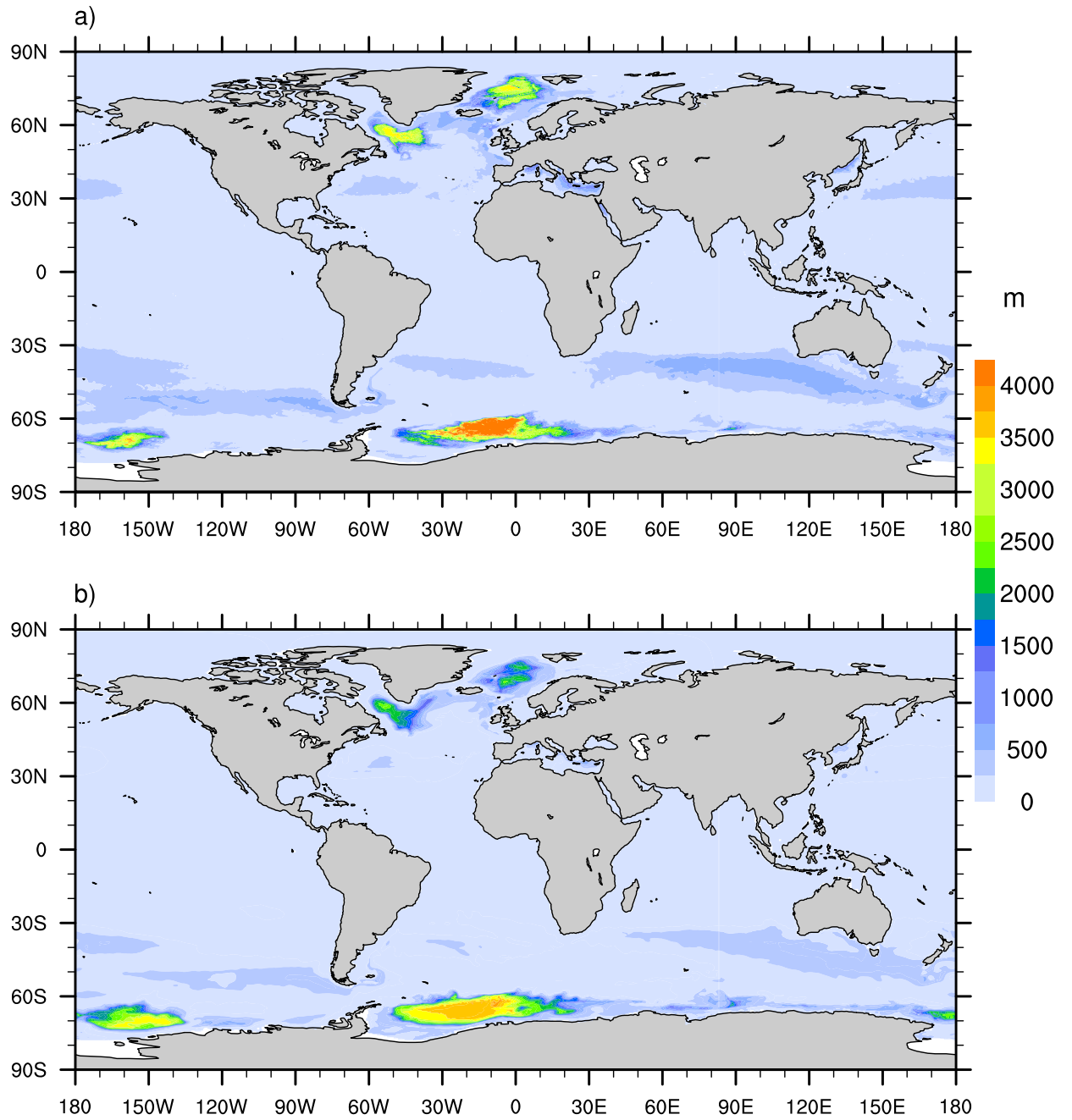


Figure 15: Max. mixed layer 1853-1857

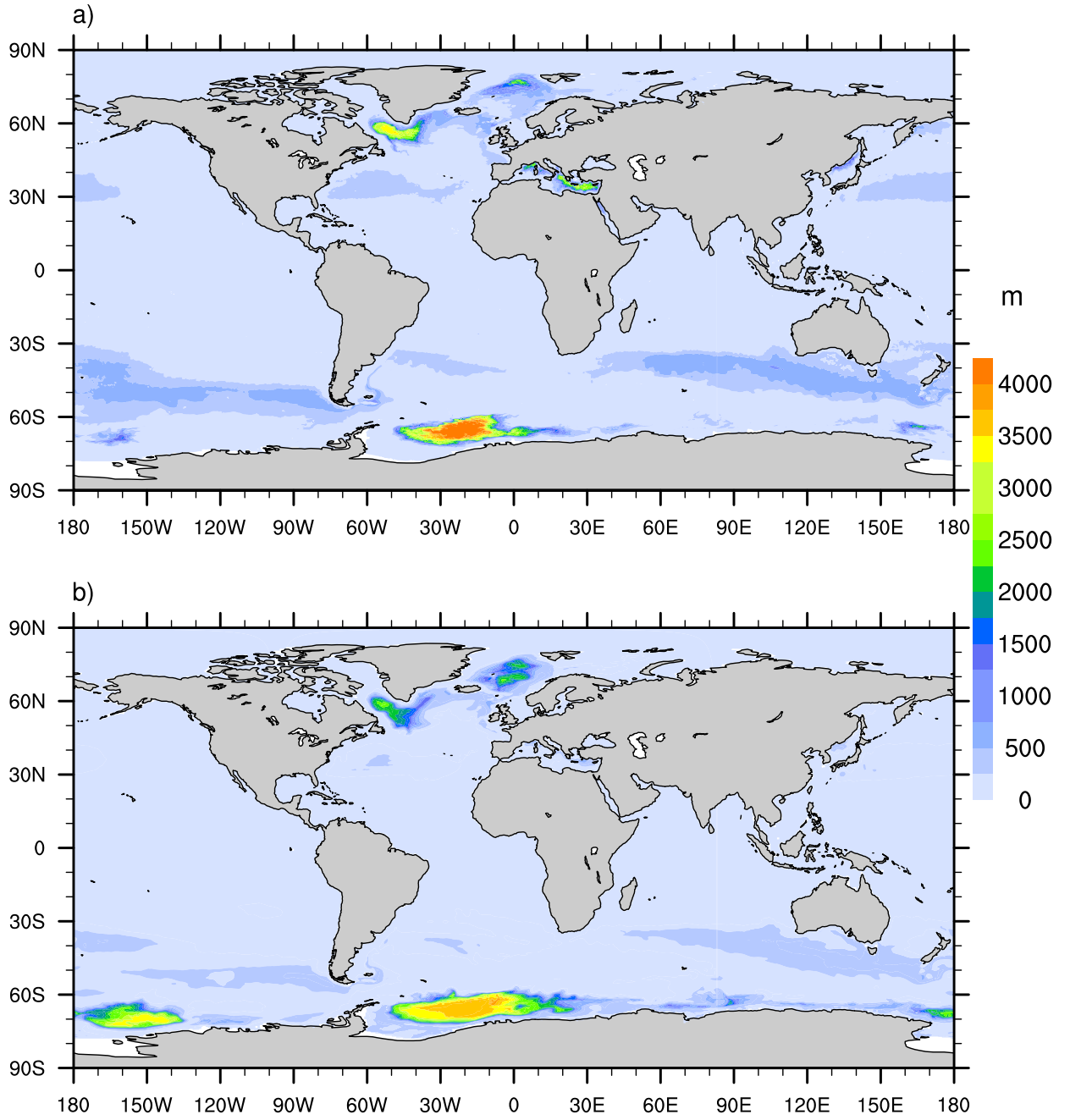


Figure 16: Max. mixed layer 1869-1873

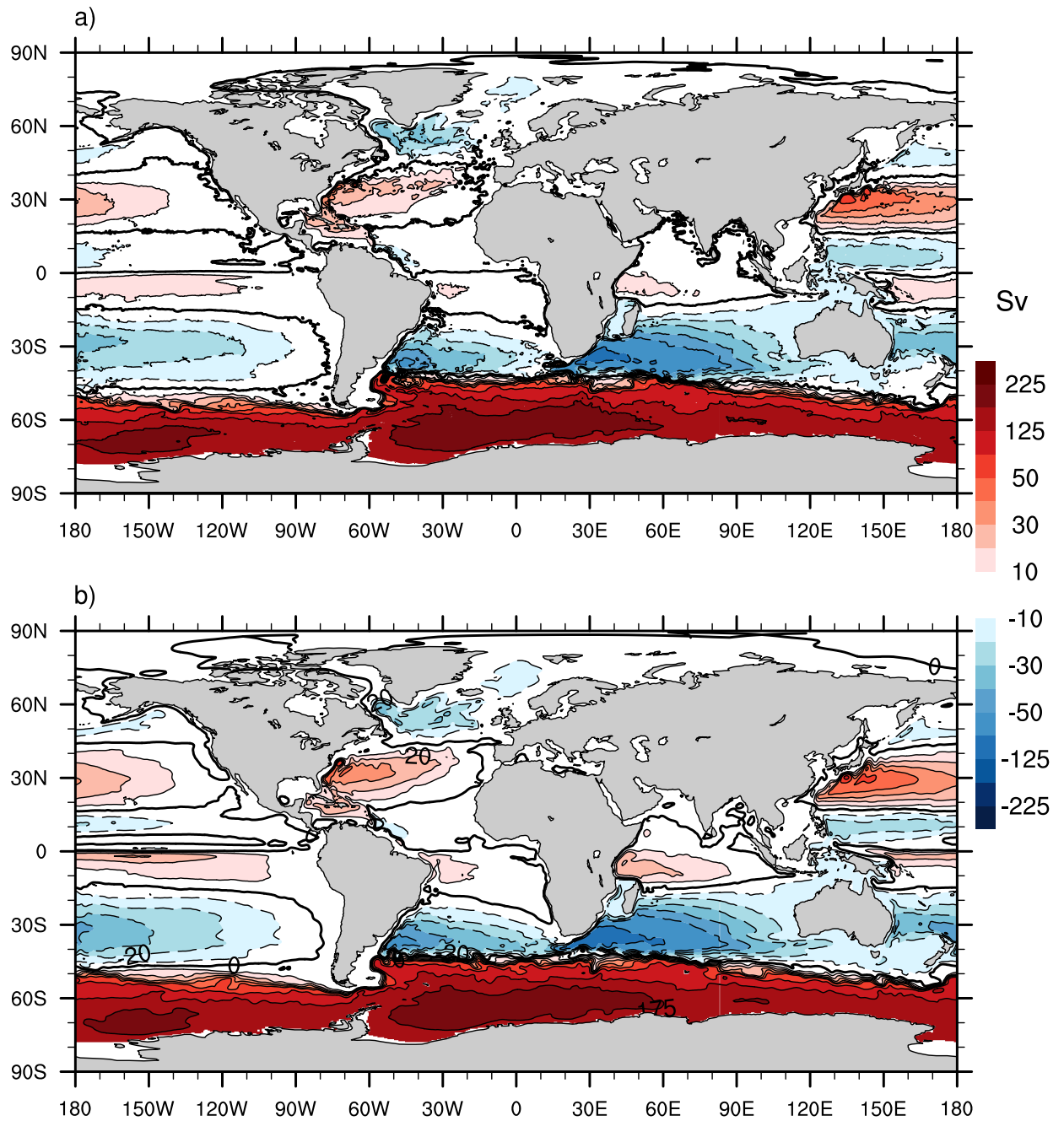


Figure 17: Barotropic stream function 1853-1857

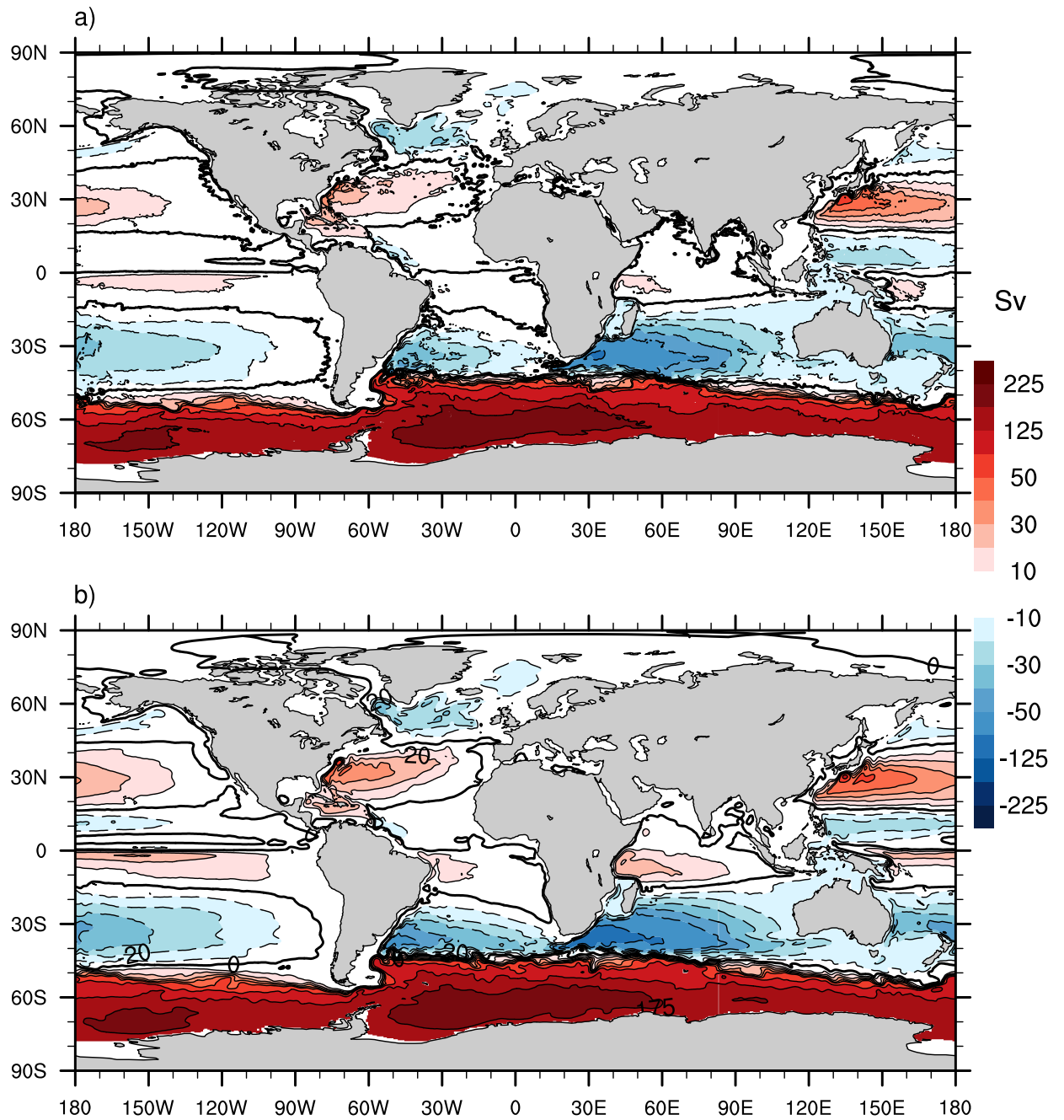


Figure 18: Barotropic stream function 1869-1873